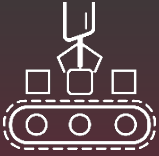


Productivity
Improvement



Remote Monitoring Increases Overseas Factory Production by **80%!**

Company A's overseas factory production output was below plan. By introducing the 'Remote monitoring system', it has enabled us to support overseas staff from within Japan to improve operational efficiency, and we have succeeded in increasing production by approximately 80%.

What's the secret?

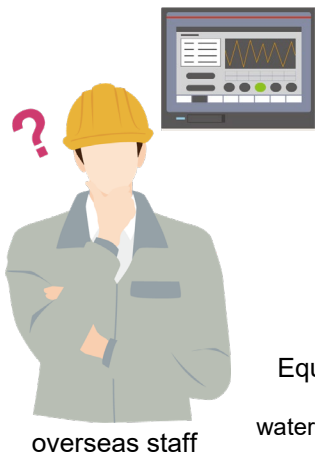
See inside
for details!



Customer's Concern

At Company A's overseas (Thailand) factory, production volume of products (water) was lower than plan due to operational problems of overseas staff. They wanted to install a safe and low cost solution to properly support their overseas staff from within Japan.

Graphic Operation Terminal



Equipment of overseas factory
(Membrane filtration water purification system in this case)

Is there a good way to support remotely from Japan?

The price of the product is low, so cannot install expensive systems, but security cannot be ignored.

The production volume is not going up due to the lack of operational skills of overseas staff.

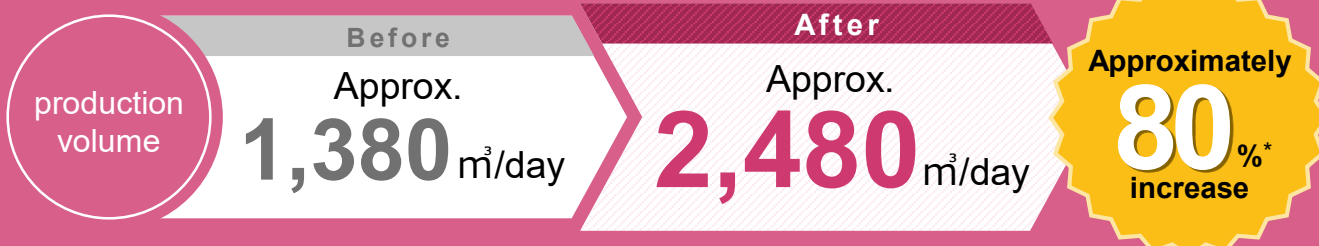


What has improved

The introduction of the inexpensive 'Remote monitoring system' enables overseas staff to operate equipment efficiently under supervision from Japan, thereby improving equipment utilization rates.

In addition, if there is a problem, an alarm is sent to Japan and remote support for restarting reduces downtime.

The output increased by about 80%.



* $2,480 \div 1,380 \approx 180\%$ (Approx. 80% increase compared to before).



Point

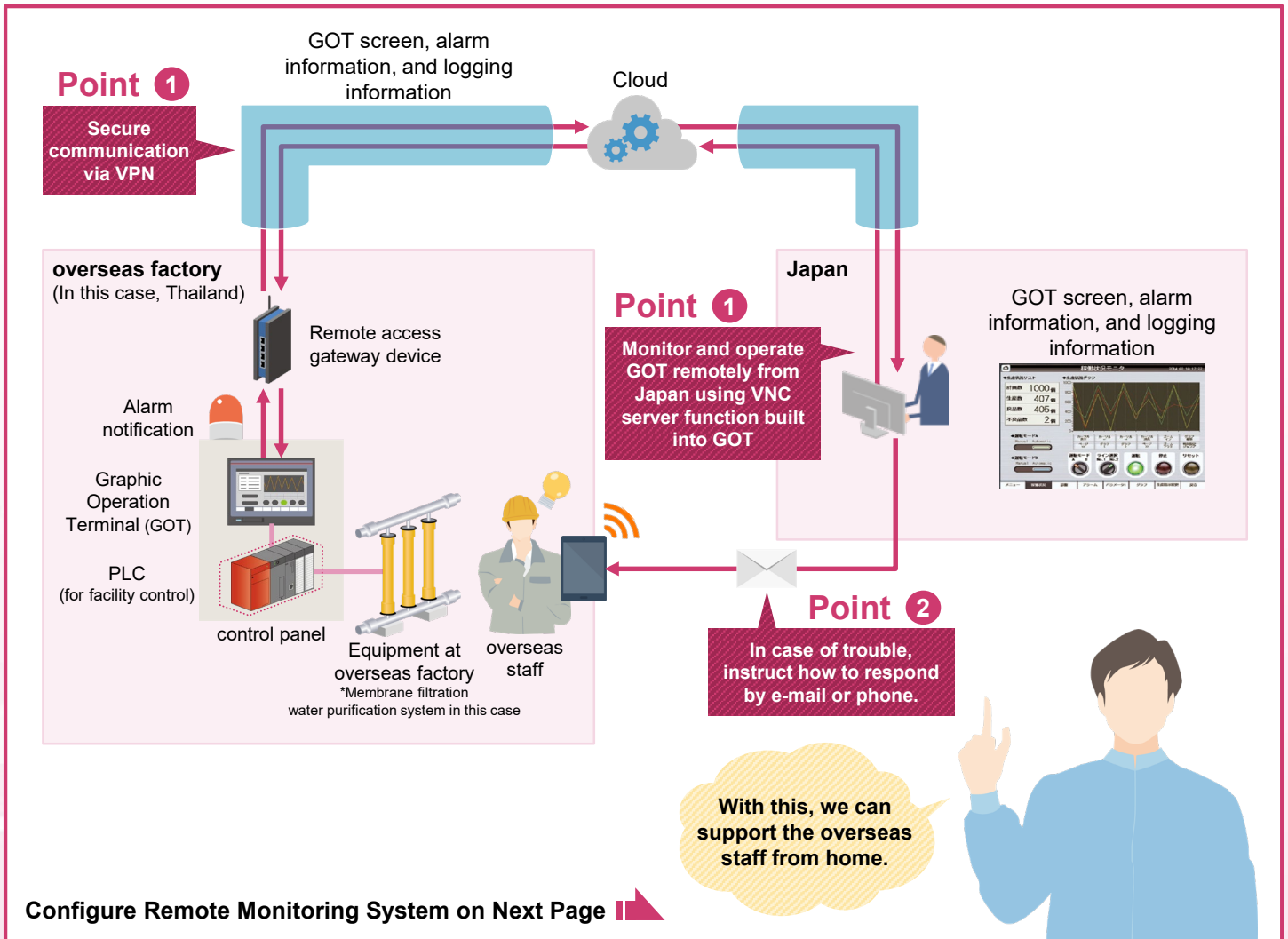
1

A low cost and secure remote monitoring system by using the VNC server function of the GOT and a remote access gateway device.

Point

2

Using the FTP function of GOT, alarm information and logging information are transferred, and in case of trouble, instructions are given from Japan to overseas staff on how to correspond



Return on investment (ROI)

Cost

About

1.5 million yen ~
(including system construction costs)

*Cloud usage fees and communication costs are approximately 150,000 yen per month.

Construction period

1 month

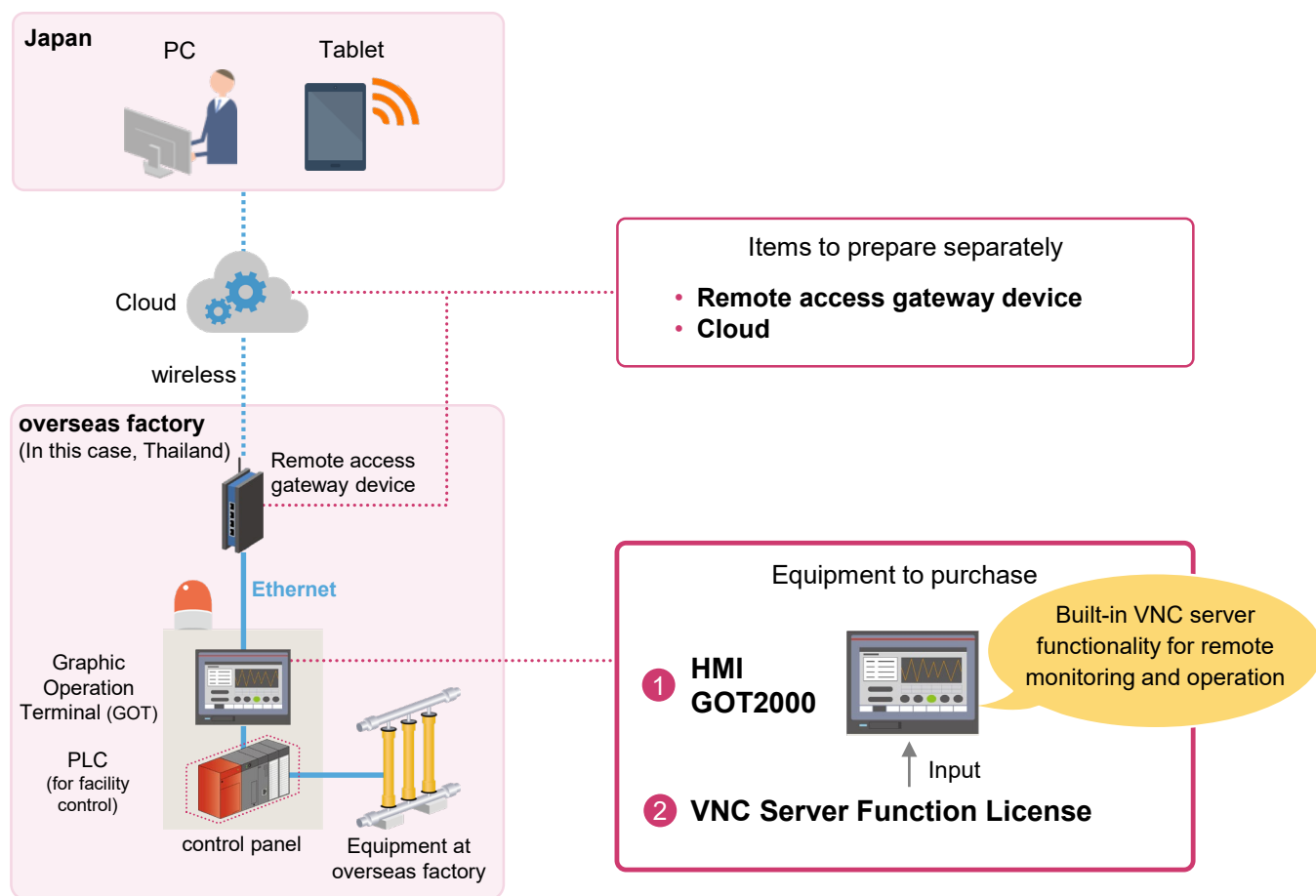
Payout period

Approximately
0.5 months

*Interpretation of payout period Assuming that additional production of $(2,480 - 1,380) \times 30$ days = 33,000 m³ per month is possible, and that the selling price overseas is 109 yen/m³, in this case, the increase in revenue per month was about 3.6 million yen. Therefore, the collection period for the introduction cost of 1.5 million yen plus cloud service and communication costs of 150,000 yen/month is $(150 + 15) / 360 \approx 0.5$ months.

Remote monitoring system overview

The system introduced in this application example utilizes the **VNC server function** built into the display **GOT2000**. By separately preparing the remote access gateway device and the cloud, it is possible to construct a remote monitoring system easily and at a low cost.



Equipment Configuration (example)

Please separately prepare cables for connection to devices other than the major devices listed below.

Type	Model	Overview	Standard price (yen)
Our products			
① HMI GOT2000	GT2710-STBA	10.4inch SVGA [800×600] 65,536 colors TFT LCD	360,000
② VNC Server Function License	GT25-VNCSKEY-1	1 license (1 license per GOT required)	28,000
Items to prepare separately			
Remote access gateway device (Made by other vendors)	-	It depends on the country, so please consult separately.	-
Cloud (Made by other vendors)	-		-

MITSUBISHI ELECTRIC CORPORATION

Head Office: Tokyo Bldg., 2-7-3, Marunouchi, Chiyoda-ku, Tokyo 100-8310, Japan
www.MitsubishiElectric.com

Trademarks and registered trademarks

Company names and product names used in this document are trademarks or registered trademarks of their respective companies.

⚠ Safety precautions

To use the products listed in this publication properly, be sure to read the relevant manuals before use.